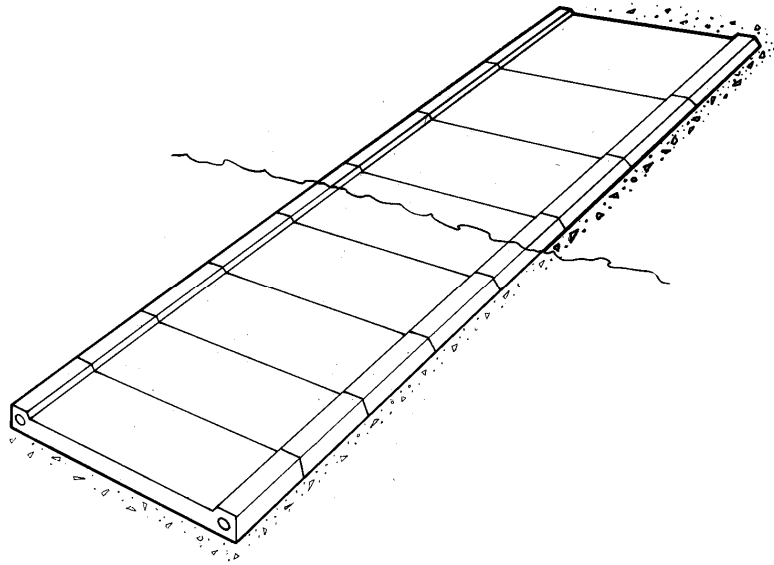


TRAILER RAMP



Characteristics.

The trailer ramps are made in prefabricated concrete elements

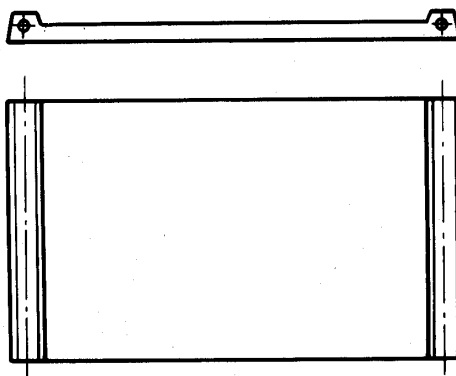
The sections of 1,5m length are tied together to the require length.

Net width 2,4 m .

The elements are installed on a level surface of gravel or macadam at 1:7 slope.

The sections are connected to each other by hot galvanized wire.

Standard overall length are 6,0; 7,5, 9,0 and 12m.



Technical data.

Length 1,5 m.

With 2,9 m.

Net with 2,4m

Height 0,12 m.

Weight aprox.1,3 ton/ element

Concrete Grade 50. Air 6%.

Reinforcement Bt500s. Net Nps500